

UNI-T®



UTi260Ex **Explosion-Proof Thermal Imager** **Quick Start Guide**

PREFACE

Thank you for purchasing the new UTi260Ex Explosion-Proof Thermal Imager. In order to use this product safely and correctly, please read this manual thoroughly, especially the Cautions part.

After reading this manual, it is recommended to keep the manual at an easily accessible place, preferably close to the device, for future reference.

LIMITED WARRANTY AND LIABILITY

Uni-Trend guarantees that the product is free from any defect in material and workmanship within one year from the purchase date. This warranty does not apply to damages caused by accident, negligence, misuse, modification, contamination and improper handling. The dealer shall not be entitled to give any other warranty on behalf of Uni-Trend. If you need warranty service within the warranty period, please contact your seller directly.

This warranty is the only compensation you can obtain. Uni-Trend will not be responsible for any special, indirect, incidental or subsequent damage or loss caused by any reason or speculation. As some areas or countries do not allow limitations on implied warranties and incidental or subsequent damage, the above limitation of liability and stipulation may not apply to you.

 **Cautions**

1. Use original factory battery (1P1S): INR18650MJ1, 3.6V/3400mAh.
2. Do not charge or replace the battery in explosive dangerous place.
3. Do not open the device in explosive condition.
4. Do not replace the battery if any explosive gas existed.
5. Do not use USB to transfer data in the dangerous place.
6. Use or store the device in specified operating or storage temperature to avoid damage.
7. Do not aim the product at strong heat sources, such as sun, laser device, spot-welder, etc.
8. Do not knock, toss, or shake the product and accessories.
9. Do not use dissolved or similar liquids on the product or cables.
10. Please follow the following instructions to wipe the device:
 - Non-optical surface: If necessary, use a clean and soft cloth to wipe the non-optical surface of the thermal imager.
 - Optical surface: Do not stain the optical surface of lens when using the thermal imager. Especially not to touch lens with hands, cause it may erode the optical coating layer on the glass surface. When the optical surface is stained, wipe it carefully with a special lens paper.
11. Keep it stable when using the device.
12. Please do not disassemble the device to avoid product damage and loss of warranty rights.
13. Due to different batches, the materials and details of actual products may be slightly different from the graphic information. Please refer to the goods received.
14. The experimental data in the manual are theoretical values and all from Uni-Trend's internal laboratories, for reference only. Customers cannot use them as basis for placing orders. If users have any questions, please contact customer service.

Content

1. Product Overview	13
2. Product Features	13
3. Packing List	13
4. Product Appearance	14
5. Display	15
6. System Settings	16
7. USB Communication & PC Analysis Software	16

1. Product Overview

Explosion-Proof Thermal Imager UTi260Ex with its inbuilt high-brightness lighting lamp meets different requirements on imaging capture mode. It analyzes images to generate report via the PC software, equips real-time projection function, IP65 rating and 2m drop-proof.

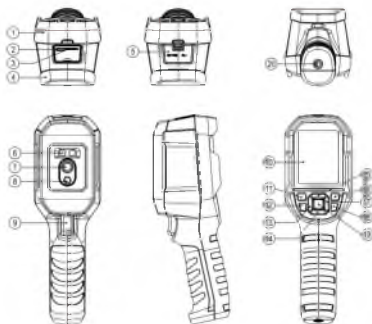
2. Product Features

- Infrared Resolution: 256*192
- Temperature Measurement Range: -20~550℃
- 2m Drop-Proof
- IP Rating: Ip65
- Explosion-Proof Rating: Ex ic IIC T6 Gc

3. Packing List

Items	Quantity
Infrared Thermal Imager	1
USB Cable	1
TF Card	1
Quick Start Guide	1
Power adapter	1

4. Product Appearance

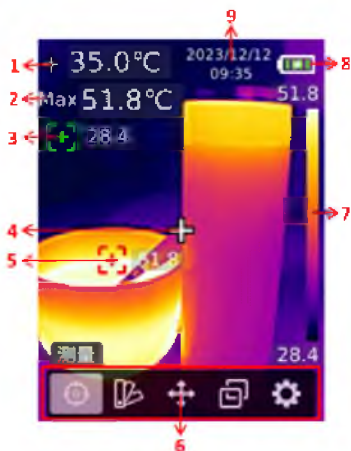


Items	Description	Items	Description
1	Upper Housing	11	POWER
2	USB Type-C Interface	12	Lighting Lamp button
3	SD Card Slot	13	LEFT
4	Lower Housing	14	DOWN
5	Protective Cover of Interface	15	UP
6	Lighting Lamp	16	Gallery button
7	Infrared Camera Lens	17	RIGHT
8	Visible-Light Camera Lens	18	RETURN
9	Trigger	19	SET
10	LCD	20	Bracket Screw Hole

4.1 Buttons

1. POWER button: Long press to power on/off.
2. Lighting Lamp button: Long press to be lighting lamp on/off.
3. SET button: Open Menu Bar/ Confirm the function.
4. Navigation buttons: Control to move cursor, long press for continuous move, short press for single move.
5. Gallery button: In the main interface, press to open Gallery.
6. RETURN button: Back to the previous interface
7. Trigger: Press to capture image in the main interface.

5. Display



Items	Description	Items	Description
1	Center Spot Temperature	6	Menu Bar
2	Auto MAX. Temperature Tracking	7	Range Bar
3	Auto Lo Spot Tracking	8	Battery Status
4	Center Spot	9	Date & Time
5	Auto Hi Spot Tracking		

5.1 Menu Bar

1. Temperature Mark: Center spot, Hi/Lo spot temperature, and temperature measurement display in key area.
2. Color Palettes: Ironbow, Rainbow, White Hot, Red Hot, Black Hot, Lava, Rainbow HC.
3. On screen analyzer: 3 points can be added.
4. Image Modes: Thermal Imaging, Visual Imaging, Fusion, PIP, Distance Alignment.
5. Settings: For system setting.

6. System Settings

Languages	Chinese/English
Date & Time	Change time format, data and time
Temperature Units	°C / °F
Hi/Lo Temperature Alarm	Hi/Lo temperature on/off (Regular red triangle popups in the main interface when the measured target temperature exceeds high alarm; Inverted green triangle popups in the main interface when the measured target temperature is below low alarm.)
Temperature Measurement Scale	Switch between high/low gain
Brightness Display	3 settings: Low/Medium/High
Auto Power Off	Set the auto power off time in 5 minutes/ 10 minutes/ 30 minutes/ OFF
USB Modes	U disk/ USB camera mode
Measured Parameters	Adjust emissivity, ambient temperature and distance
System Settings	View Device information, Factory reset, SD card formatting, Auto-save on/off.

7. USB Communication & PC Analysis Software

1. Please download and install PC software as per the Download Guide.
2. Set the USB mode to U Disk mode, connect computer via the USB cable, navigate images and analyze data through the PC software.
3. Set the USB mode to USB Camera mode, connect computer via the USB cable, and achieve the real-time image projection through the PC projection software.
4. Please refer to Software User Manual for PC software using methods in the Help option.

Note: Do not unplug USB cable during the computer projection. After finishing the projection, disable the projection software first, unplug the USB cable followed.

* The contents of this manual are subject to change without prior notice*

UNI-T.

UNI-TREND TECHNOLOGY (CHINA) CO., LTD.

No. 6, Gong Ye Bei 1st Road,
Songshan Lake National High-Tech Industrial
Development Zone, Dongguan City,
Guangdong Province, China